

- MV ring main units
- HV metering units
- LV transformer cabinets
- Package substations
- LV distribution pillars
- LV substation fuseboards
- Multi service pillars
- Multi service distribution boards
- Heavy duty cutouts
- Domestic service cutouts
- Street lighting cutouts
- Pole mounting cutouts
- ABC service boxes
- Connector boxes
- Fuse links
- Weatherproof housings
- Earth fault indicators
- MV and HV disconnectors
- MV and HV connectors



○ Cut - out solutions



# Contents

2

## HSCO – House Service Cut-outs

- MLNS Connector Box
- SP, SPNE, TPNE – Single Pole or Triple Pole, Neutral and Earth Cut-out

5

## HDCO – Heavy Duty Cut-outs

- MC300 – Single Pole Cut-out 300A
- MC630 – Three Phase & Neutral Cut-out 630A
- GF200/400/600 – Three Phase & Neutral Cut-out 200A, 400A, 600A
- MPC400 – Pole Mounted Cut-out
- ABC Service Box

11

## MSDB – Multi Service Distribution Boards

- Multi Service Distribution Boards – Horizontal Busbar Arrangement
- Multi Service Distribution Boards – Vertical Busbar Arrangement

13

## Street Lighting Cut-outs

- SLF – Single Phase Cut-out 25A

14

## Accessories

- Fuse Accessories



# HSCO House Service Cut-out

## MLNS Connector box

### Features

#### MLNS5

- CONFORMS TO BS 7657:1993 SPECIFICATION
- MOULDED IN GREY GLASS FILLED ENGINEERING THERMOPLASTIC
- MOULDED SHIELD FOR EACH CABLE EXIT
- SINGLE POLE
- 5 WAY CONNECTOR BOX
- USED FOR LIVE AND NEUTRAL CONNECTIONS
- ALTERNATIVE LABELLED COVER WHEN USED AS EARTH BLOCK
- SEALING WIRE FACILITY
- TWO TERMINAL PINCH SCREWS FOR EACH CABLE ENTRY
- TERMINATION BLOCK MACHINED FROM BRASS, WITH SERRATED CABLE BORES
- ACCEPTS 2 X 35MM<sup>2</sup> CABLES AT BOTTOM AND 3 X 35MM<sup>2</sup> CABLES AT TOP

#### MLNS6

- MOULDED IN BLACK PHENOLIC THERMOSET MATERIAL
- SINGLE POLE
- 6 WAY CONNECTOR BOX
- CAPTIVE SEALING SCREWS
- SEALING WIRE FACILITY
- TWO TERMINAL PINCH SCREWS FOR EACH CABLE ENTRY
- TERMINATION BLOCK MACHINED FROM BRASS, WITH SERRATED CABLE BORES
- ACCEPTS 2 X 70MM<sup>2</sup> CABLES AT BOTTOM AND 3 X 70MM<sup>2</sup> CABLES AT TOP



MLNS5



MLNS6



Ref.	Description	Material	Dimensions in mm
MLNS5	5 way single pole connector box	Grey glass filled engineering thermoplastic	H58 W49 D42
MLNS6	6 way single pole connector box	Black phenolic thermoset	H53 W115 D53

Ref.	Options
H	3mm Hex-Drive pinch screws

# HSCO House Service Cut-out

SP/SPNE

## Features

- ACCEPTS FUSE LINKS IN ACCORDANCE WITH BS 1361:1991
- MAXIMUM RATING TYPE IIa FUSE 60/80A
- MAXIMUM RATING TYPE IIb FUSE 100A
- NON INTERCHANGEABLE SOLID LINK DISCONNECTOR AVAILABLE
- TESTED AND APPROVED TO BS 7657:1993
- MOULDED IN LIGHT GREY GLASS REINFORCED POLYESTER DMC THERMOSET MATERIAL
- SOLID BRASS TERMINAL BLOCKS WITH SERRATED BORES AND TWO HEXAGON DRIVE TERMINAL PINCHING SCREWS PER CONDUCTOR
- TWO INCOMING AND OUTGOING TERMINALS
- SHIELDED INCOMING AND OUTGOING PHASE PROTECTION
- ACCEPTS CONDUCTORS UP TO 35MM<sup>2</sup>
- REVERSIBLE MOUNTING
- SEALING WIRE FACILITY
- BUSBAR FACILITY TO INTERCONNECT CUT-OUTS
- SP CAN BE USED IN CONJUNCTION WITH CNE CUT-OUT TO FORM TPNE SET
- UNUSED CABLE ENTRY SEALING PLUGS SUPPLIED
- SWITCH WIRE PROVISION ON NEUTRAL/EARTH BLOCK
- SEPARATE CABLE COVER OR SEALING CHAMBER
- SAFETY INTERLOCKED MOULDINGS. NO COVER MOULDINGS CAN BE REMOVED UNTIL FUSE CARRIER OR SOLID LINK IS WITHDRAWN.



SP 100



SPNE 100



SPNE 100 with Cable Cover



TPNE 100 with Cable Cover

# HSCO House Service Cut-out

SP/SPNE



Ref.	Description	Fuse rating	Dimensions in mm
SP 60/80	DMC SP 60/80A House Service Cut-out	Type IIa 60/80A	H98 W44 D96
SP 100	DMC SP 100A House Service Cut-out	Type IIb 100A	H98 W44 D96
SPNE 60/80	DMC SPNE 60/80A House Service Cut-out	Type IIa 60/80A	H98 W84 D96
SPNE 100	DMC SPNE 100A House Service Cut-out	Type IIb 100A	H98 W84 D96
SPNE L	DMC SPNE Solid Link Disconnecter		H98 W84 D96
TPNE 60/80	DMC SP 60/80 + SPNE 60/80 House Service Cut-out	Type IIa 60/80A	H98 W180 D96
TPNE 100	DMC SP 100 + SPNE 100 House Service Cut-out	Type IIb 100A	H98 W180 D96

Ref.	Accessories	Dimensions in mm
SPNE CC	DMC SPNE Cable Cover	H102 W87 D42
SPNE SC	DMC SPNE Sealing Chamber	H135 W123 D75
SEBL	Single Extension Busbar Link kit	
DEBL	Double Extension Busbar Link kit	

Ref.	Options
F60	Fitted with 60A Fuse link
F80	Fitted with 80A Fuse link
F100	Fitted with 100A Fuse link

TPNE CC	DMC TPNE Cable Cover	H166 W185 D52
TPNE SC	DMC TPNE Sealing Chamber	H165 W235 D75

Ref.	Spares	
RFC80	60/80 Replacement Fuse Carrier	Type IIa 60/80A
RFC100	100 Replacement Fuse Carrier	Type IIb 100A
RDL	Replacement Disconnecter Link	

Example TPNE 100 - TPNE SC - F100  
100A TPNE HSCO with sealing chamber, fitted with 100A fuse links

# HDCO Heavy Duty Cut-out

MC300

## Features

- ACCEPTS BS 88 J TYPE FUSE LINKS
- MAXIMUM RATING 300A
- FUSE CARRIER WITH 83MM CENTRES
- MOULDED IN WHITE GLASS FILLED POLYESTER THERMOSET MATERIAL
- ALL CONTACTS MANUFACTURED FROM SOLID BRASS SECTION WITH 2 TERMINAL PINCHING SCREWS PER CONDUCTOR
- CABLE ENTRY AND EXITS THROUGH PVC GROMMET
- MAXIMUM CABLE SIZE 185MM<sup>2</sup>
- OPTIONAL "NEUTRAL" LINK
- REFER TO PAGE 14 FOR FUSE BASES, CONTACTS AND FUSE HANDLES



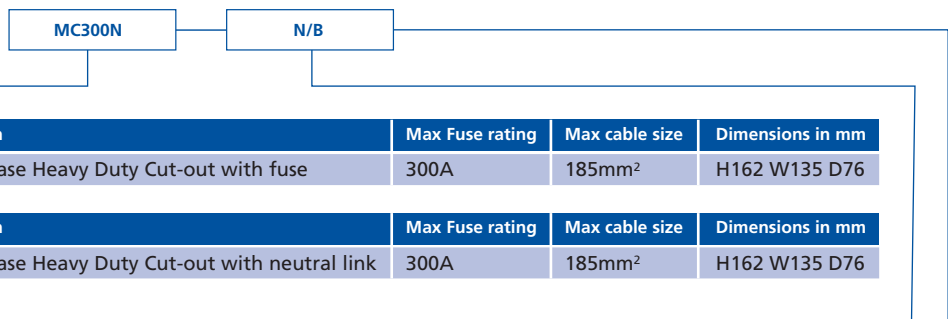
Type 1 Clamp fitting for 35mm<sup>2</sup> to 120mm<sup>2</sup>



Type 2 Clamp fitting for 185mm<sup>2</sup>



Type 3 Tunnel Terminal for 95mm<sup>2</sup>



Ref.	Description	Max Fuse rating	Max cable size	Dimensions in mm
MC300	Single Phase Heavy Duty Cut-out with fuse	300A	185mm <sup>2</sup>	H162 W135 D76

Ref.	Description	Max Fuse rating	Max cable size	Dimensions in mm
MC300N	Single Phase Heavy Duty Cut-out with neutral link	300A	185mm <sup>2</sup>	H162 W135 D76

Ref.	Fittings for MC300	
A	Type 2 contact	Fittings 185mm <sup>2</sup> / 185mm <sup>2</sup>
B	Type 2/3 contact	Fittings 185mm <sup>2</sup> / 2 x 95mm <sup>2</sup>
C	Type 3 contact	Fittings 2 x 95mm <sup>2</sup> / 2 x 95mm <sup>2</sup>
H	Type 1 contact	Fittings 35-120mm <sup>2</sup> / 35-120mm <sup>2</sup>
J	Type 1/3 contact	Fittings 35-120mm <sup>2</sup> / 2 x 95mm <sup>2</sup>

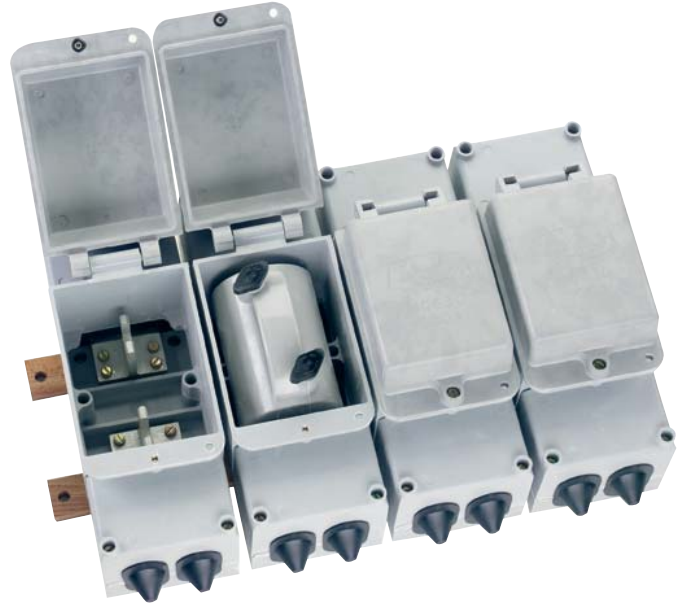
Ref.	Fittings for MC300N	
N/A	Type 2 contact	Fittings 185mm <sup>2</sup> / 185mm <sup>2</sup>
N/B	Type 2/3 contact	Fittings 185mm <sup>2</sup> / 2 x 95mm <sup>2</sup>
N/C	Type 3 contact	Fittings 2 x 95mm <sup>2</sup> / 2 x 95mm <sup>2</sup>
N/E	Type 1 contact	Fittings 35-120mm <sup>2</sup> / 35-120mm <sup>2</sup>
N/F	Type 1/3 contact	Fittings 35-120mm <sup>2</sup> / 2 x 95mm <sup>2</sup>

# HDCO Heavy Duty Cut-out

MC630

## Features

- ACCEPTS BS 88 J TYPE FUSE LINKS
- MAXIMUM RATING 630A
- FUSE CARRIER WITH 92MM CENTRES
- MOULDED IN LIGHT GREY GLASS REINFORCED POLYESTER DMC
- EACH PHASE FULLY INSULATED WITH SEPARATE LID
- WOODEN BATTENS PRE-DRILLED FOR WALL MOUNTING
- SINGLE PHASE OR THREE PHASE VERSIONS AVAILABLE
- MAXIMUM CABLE SIZE 2 X 300MM<sup>2</sup>
- CABLE ENTRY AND EXIT THROUGH PVC GROMMETS
- ALL CABLE TERMINATIONS MANUFACTURED IN HARD DRAWN COPPER
- COPPER NEUTRAL LINK SECURED BY BOLTS
- INCOMING CONNECTIONS CAN BE INSULATED WHILST TERMINATING OUTGOING CONNECTIONS



4MC630

MC630

Ref.	Description	Max Fuse rating	Max cable size	Dimensions in mm
MC630	Single Phase Heavy Duty Cut-out	630A	2X300mm <sup>2</sup>	H350 W120 D180
4MC630	Three Phase and Neutral Heavy Duty Cut-out	630A	2X300mm <sup>2</sup>	H350 W500 D195

# HDCO Heavy Duty Cut-out

Insulated Single Pole Three Phase & Neutral GF

## Features

- MOULDED IN LIGHT GREY GLASS REINFORCED POLYESTER DMC
- 200A, 400A OR 600A RATING
- ACCEPTS BS 88 J TYPE FUSE LINK ON PHASES
- FUSE CARRIERS WITH 83MM OR 92MM CENTRES
- LIFT OFF COVER WITH SECURITY SEALING FACILITIES
- TWO PART DETACHABLE CABLE TROUGH
- CABLE SIZES: 120MM<sup>2</sup>, 185MM<sup>2</sup> OR 300MM<sup>2</sup>
- THREE CABLE ENTRY POSITIONS BY EITHER BRASS GLAND OR PVC GROMMET
- CABLE EXIT BY WOODEN OR CLOSED CELL FOAM CABLE BUSH
- AVAILABLE WITH SHEAR HEAD MECHANICAL CONNECTORS ON INCOMING OR OUTGOING TERMINALS
- VARIABLE NEUTRAL/EARTH TERMINATIONS SOLUTIONS TO SUIT SPECIFIERS' REQUIREMENTS
- INCOMING CONNECTIONS CAN BE INSULATED/SHROUDED WHILST OUTGOING CONNECTIONS ARE BEING TERMINATED
- ALL CABLE TERMINATIONS MANUFACTURED IN HARD DRAWN COPPER
- SUITABLE FOR BOTH PME AND SNE APPLICATIONS
- TOP PLATE ADAPTOR AVAILABLE TO CONNECT WITH METERING CABINET



GF200



GF400



GF600

# HDCO Heavy Duty Cut-out

GF



Ref.	Description	Max Fuse rating	Fuse carrier	Dimensions in mm
GF200	TPNE FUSED CUTOUT	200A	83mm centre	H425 W355 D187

Ref.	Description	Max Fuse rating	Fuse carrier	Dimensions in mm
GF400	TPNE FUSED CUTOUT	400A	83mm centre	H647 W510 D228

Ref.	Description	Max Fuse rating	Fuse carrier	Dimensions in mm
GF600	TPNE FUSED CUTOUT	600A	92mm centre	H827 W550 D258

### Cable Terminations Options

Ref.	Incoming	Outgoing
TC - TC	Tunnel Connector	Tunnel Connector
LT - TC	Lug Termination	Tunnel Connector
SMC1 - TC	Shear Head Mechanical Connectors for 95mm <sup>2</sup> cable	Tunnel Connector
SMC2 - TC	Shear Head Mechanical Connectors for 185mm <sup>2</sup> cable	Tunnel Connector
SMC1 - MC	Shear Head Mechanical Connectors for 95mm <sup>2</sup> cable	Mechanical Connector
SMC2 - MC	Shear Head Mechanical Connectors for 185mm <sup>2</sup> cable	Mechanical Connector

Ref.	Incoming	Outgoing
LT - LT	Lug Termination	Lug Termination
SMC2 - LT	Shear Head Mechanical Connectors for 185mm <sup>2</sup> cable	Lug Termination
SMC3 - LT	Shear Head Mechanical Connectors for 300mm <sup>2</sup> cable	Lug Termination
SMC2 - MC	Shear Head Mechanical Connectors for 185mm <sup>2</sup> cable	Mechanical Connector
SMC3 - MC	Shear Head Mechanical Connectors for 300mm <sup>2</sup> cable	Mechanical Connector

Ref.	Incoming	Outgoing
LT - LT	Lug Termination	Lug Termination
SMC3 - LT	Shear Head Mechanical Connectors for 300mm <sup>2</sup> cable	Lug Termination
SMC3 - MC	Shear Head Mechanical Connectors for 300mm <sup>2</sup> cable	Mechanical Connector

Ref.	Top Exit Plate
FB	Closed Cell Foam Cable Bush
WB	Wooden Cable Bush



TC - Tunnel Connector



LT - Lug Termination



SMC - Shear Head Mechanical Connector



MC - Mechanical Connector

Example      HDCO GF 400 LT - LT - FB  
 GF400 Heavy Duty Cut-out with lug termination and cable exit by closed cell foam plate

**Features**

- COMPLIES WITH BS 7656:1993
- ACCEPTS BS 88 J TYPE FUSE LINKS HAVING 83MM FIXING CENTRE
- MAXIMUM FUSE RATING 400A
- MAXIMUM CABLE SIZE 185MM<sup>2</sup>
- MOULDED IN LIGHT GREY GLASS REINFORCED POLYESTER DMC
- SUPPLIED WITH COACH BOLT FOR FIXING TO WOOD POLE
- AVAILABLE WITH COMPRESSION LUG OR SHEAR HEAD MECHANICAL CONNECTORS
- FITTED WITH PVC CABLE ENTRY GROMMETS



Ref.	Description	Max Fuse rating	Max cable size	Dimensions in mm
MPC400	Pole mounted cut-out	400A	185mm <sup>2</sup>	H267 W140 D215

Ref.	Cable Terminations
SMC2	Shear Head Mechanical Connectors for 185mm <sup>2</sup> cable
LT	Lug Termination



## ABC Service Box

### Features

- COMPLIES WITH EATS STANDARD 43-14
- MANUFACTURED IN STRONG THERMOPLASTIC MATERIAL WITH EXTERNAL PROTECTION TO IP 43
- ACCEPTS CABLES UP TO 50MM<sup>2</sup>
- UP TO 9 SERVICE CABLES BALANCED OVER THREE PHASES PROTECTED BY POLYCARBONATE COVERS AND TAGS TO SCREEN UNUSED LIVE WAYS
- SOLID BRASS TINNED NEUTRAL BLOCK WITH DEFLECTIVE PVC COVER
- ALL TERMINAL BLOCKS HAVE SERRATED BORES
- OUTGOING CABLES (MAXIMUM 35 MM<sup>2</sup>) EXIT THROUGH TOP MOUNTED CLOSED CELL FOAM CABLE BUSH
- INTERNAL PROTECTION TO IP2XB
- SUPPLIED AS STANDARD WITH 2 OFF 19MM HEXAGON HEAD COACH BOLTS FOR WOODEN POLE MOUNTING
- SUITABLE FOR WALL OR BRACKET MOUNTING



ABC Box

ABC

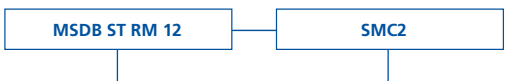
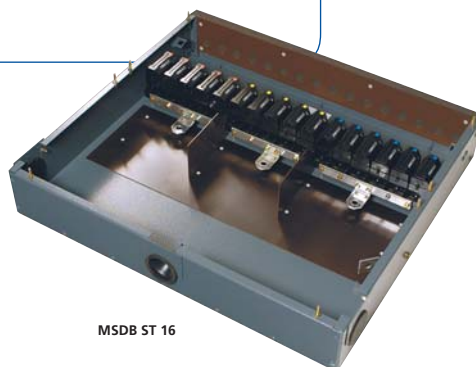
Ref.	Description	Max Fuse rating	Max cable size	Dimensions in mm
ABC	Aerial Bundled Conduct Service Box	200A	50mm <sup>2</sup>	H384 W390 D106

# MSDB Multi Service Distribution Boards

## Horizontal Busbar Arrangement

### Features

- MANUFACTURED IN LIGHT GREY GLASS REINFORCED POLYESTER (GF) OR 1.6MM STEEL (ST) AND PAINTED WITH EPOXY POWDER ELECTROSTATIC OVEN CURED PAINT
- POLYESTER STOVE ENAMELLED TEXTURED PAINT FINISHED IN ADMIRALTY GREY TO BS 381C SHADE NO. 632
- FITTED WITH TWO PART REMOVABLE OUTER COVER AND FOUR BOSSES FOR WALL MOUNTING
- HORIZONTAL BUSBAR ARRANGEMENT
- SECURITY SEALING FACILITY ON PHASE CUT-OUTS AND OUTER COVER
- INTERIOR FITTED WITH BS 7657: 1993 CUT-OUTS USING IIb TYPE FUSES (MAXIMUM RATING 100A)
- 300A BUSBAR RATING
- INTERNAL PROTECTION TO IP2XB
- INCOMING CABLE NOMINAL 185MM<sup>2</sup> ENTERING THROUGH PVC GROMMET IN ONE OF THREE POSITIONS
- OUTGOING CABLES NOMINAL 35MM<sup>2</sup> EXIT THROUGH PVC GROMMETS OR THROUGH A CLOSED CELL FOAM TOP PLATE. INSULATED FRONT SCREENS PROTECT LIVE INCOMING TERMINALS
- TERMINATION BY COMPRESSION OR MECHANICAL CONNECTORS ONTO COPPER BUSBARS
- SOLID BRASS 2 PIECE NEUTRAL/EARTH BAR WITH LINK FACILITY AND TUNNEL TERMINATIONS HAVING 8MM DIAMETER TERMINAL PINCHING SCREWS
- EARTH CONNECTION MANUFACTURED IN HARD DRAWN COPPER WITH BRASS STUD
- CIRCUIT IDENTIFICATION/LABELLING FACILITY



Ref.	Busbar Arrangement	Material	Description	No of ways
MSDB GF 7	Horizontal	Glass Fibre	7 SP/N cut-out with 3 blank ways	7
MSDB GF 10	Horizontal	Glass Fibre	10 SP/N cut-out	10
MSDB ST 7	Horizontal	Steel	7 way SP/N cut-out	7
MSDB ST 10	Horizontal	Steel	10 way SP/N cut-out	10
MSDB ST 16	Horizontal	Steel	16 way SP/N cut-out	16
MSDB ST RM 12	Vertical	Steel	MSDB for rising main	12
MSDB ST RM 18	Vertical	Steel	MSDB for rising main	18
MSDB ST RM 24	Vertical	Steel	MSDB for rising main	24
MSDB ST RM 30	Vertical	Steel	MSDB for rising main	30
MSDB ST RM 36	Vertical	Steel	MSDB for rising main	36
MSDB ST J 12	Vertical	Steel	Combined MSDB and J	12
MSDB ST J 18	Vertical	Steel	Combined MSDB and J	18
MSDB ST J 24	Vertical	Steel	Combined MSDB and J	24
MSDB ST J 30	Vertical	Steel	Combined MSDB and J	30
MSDB ST J 36	Vertical	Steel	Combined MSDB and J	36

# MSDB Multi Service Distribution Boards

## Vertical Busbar Arrangement

### Features

- MANUFACTURED IN 1.6MM STEEL AND PAINTED WITH EPOXY POWDER ELECTROSTATIC OVEN CURED PAINT
- POLYESTER STOVE ENAMELLED TEXTURED PAINT FINISHED IN ADMIRALTY GREY TO BS 381C SHADE NO. 632
- VERTICAL BUSBAR ARRANGEMENT
- ONE PIECE 1.6MM STEEL REMOVABLE COVER WITH SECURITY SEALING FACILITY
- FOUR BOSSES FOR WALL MOUNTING
- FITTED WITH INTERIOR BS 7657:1993 CUT-OUTS USING  $\text{I}^2\text{b}$  FUSES MAXIMUM RATING 100A
- 500A BUSBAR RATING
- INTERNAL PROTECTION TO IP2XB
- INCOMING CABLE NOMINAL  $300\text{mm}^2$  ENTERS TOP OR BOTTOM THROUGH PVC GROMMET TERMINATION BY COMPRESSION OR MECHANICAL CONNECTORS ONTO COPPER BUSBARS
- OUTGOING CABLES NOMINAL  $35\text{mm}^2$  EXIT ENCLOSURE THROUGH A CLOSED CELL FOAM TOP PLATE. INSULATED FRONT SCREENS PROTECT LIVE INCOMING TERMINALS
- CIRCUIT IDENTIFICATION/LABELLING FACILITY
- SOLID BRASS NEUTRAL BLOCK
- OPTIONAL SOLID BRASS EARTH BLOCK
- REMOVABLE NEUTRAL/EARTH LINK FACILITY
- AVAILABLE IN PME OR SNE CONFIGURATION
- MSDB ST J IS AVAILABLE WITH FUSED INCOMER, MANUFACTURED IN 2MM STEEL (630A BUSBAR RATING)



MSDB ST RM 12



MSDB ST J Type

	Fuse rating	Dimensions in mm
	100A	H652 W576 D143
	100A	H652 W576 D143
	100A	H602 W392 D147
	100A	H741 W533 D147
	100A	H741 W815 D147

	100A	H1020 W457 D192
	100A	H1020 W551 D192
	100A	H1020 W645 D192
	100A	H1020 W739 D192
	100A	H1020 W833 D192
	100A	H1120 W513 D440
	100A	H1120 W607 D440
	100A	H1120 W701 D440
	100A	H1120 W795 D440
	100A	H1120 W889 D440

Ref.	Cable Termination Options
SMC2	Shear Head Mechanical Connectors for $185\text{mm}^2$ cable
SMC3	Shear Head Mechanical Connectors for $300\text{mm}^2$ cable
LT	Lug Termination

Example:

MSDB ST RM 12 - SMC2

MSDB for rising main, steel material, 12 ways, and fitted with mechanical connectors for  $185\text{mm}^2$  cables

# Street Lighting Cut-out

## SLF Single Phase Fuse Unit

### Features

- DESIGNED, MANUFACTURED AND TESTED IN ACCORDANCE WITH BS 7654:1997
- MOULDED IN HIGH GRADE, HIGH PERFORMANCE THERMOPLASTIC TO BS 7654:1997
- MEETS DEGREE OF PROTECTION IP2XB EXTERNALLY
- ACCEPTS FUSE LINKS TO BS 88 PART 1, AC16 TAG TYPE
- 25A CURRENT RATING
- SINGLE POLE ISOLATION
- AVAILABLE WITH SEPARATE NEUTRAL AND EARTH (SNE) OR COMBINED NEUTRAL/EARTH (CNE) FOR PME INSTALLATIONS
- SINGLE FUSE
- ALL TERMINALS ARE FORMED FROM SOLID BRASS, SERRATED AND ELECTROPLATED
- CONDUCTOR PINCH SCREWS SLOTTED OR 3MM HEX DRIVE
- MAXIMUM CABLE OF 16MM<sup>2</sup> STRANDED COPPER OR 25MM<sup>2</sup> SOLID ALUMINIUM CONDUCTORS
- CABLE ENTRY VIA PVC GROMMETS AS STANDARD
- OUTGOING CABLES EXIT BELOW HORIZONTAL TO FORM DRIP LOOP
- SEALING WIRE FACILITY
- CAM OPERATED LEVER MECHANISM WITH REDUCED EXTRACTION FORCE TO DISCONNECT THE FUSE CARRIER



SLF SNE

H

Ref.	Description	Dimensions in mm
SLF SNE	TYPE 1 Separate Neutral & Earth	H150 x W76 x D61
SLF CNE	TYPE 2 Combined Neutral & Earth	H150 x W76 x D61

Ref.	Options
H	3mm Hex-Drive pinch screws
F25	Fitted with 25A Fuse Link
FX	Fitted with XA (Please specify fuse rating)

# Accessories



## J Fuse

- Conforms to BS 88 PT6 and EA 12-10 and 12-20
- For use in LV switchgear, pole mounted cut-outs and heavy duty cut-outs
- Rated Voltage: 415V a.c.
- Rated breaking capacities: 80kA at 415V a.c.

Fixing Centre 83mm	G 92mm	Current Rating
JPU 63	JSU 63	63A
JPU 80	JSU 80	80A
JPU 100	JSU 100	100A*
JPU 125	JSU 125	125A
JPU 160	JSU 160	160A*
JPU 200	JSU 200	200A*
JPU 250	JSU 250	250A*
JPU 315	JSU 315	315A*
JPU 355	JSU 355	355A*
JPU 400	JSU 400	400A*
(JPU 450)	JSU 450	450A
(JPU 500)	JSU 500	500A*
(JPU 560)	JSU 560	560A
(JPU 630)	JSU 630	630A*
-	JSU 800	800A

\* BS 88: part 5: 1988 standardised current ratings

(XX) restricted to intermittent loading when used in 400A contacts

NB: JSU 800 fuse-links comply with BS 88: part1: 1988 and are restricted to intermittent loading when used in 630A contacts.



## RH & RHL Fuse

- Conforms to BS 1361, EA 12-10 and IEC requirements
- Rated Voltage: 240V a.c.
- Breaking range and utilization category: gG
- Rated breaking capacities: 20kA at 240V a.c.

Ref.	Current Rating	Dimensions in mm
RH60	Type IIa 60A	L 57 D22.23
RH80	Type IIa 80A	L 57 D22.23
RHL60	Type IIb 60A	L 57 D30.16
RHL80	Type IIb 80A	L 57 D30.16
RHL100	Type IIb 100A	L 57 D30.16

## Screwdriver Operated Wedge Links

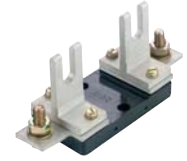
- Operation by screwdriver wedge tightening
- Manufactured in hard drawn copper
- Wedge and tightening block manufactured from solid brass sections
- Lifting lug for easy removal
- Angled sides for entry guidance
- Link extractor tool available

Ref.	Current Rating	Contact centre
25169	400A	83mm
25170	600A	92mm
25171	800A	92mm



## Fuse Bases

- Accepts BS 88 J type fuse link on phases
- Base mounted in phenolic
- All tunnel cable terminations manufactured from solid brass section with 2 pinching screws on each conductor
- All T section terminations manufactured from solid brass section
- Connector pads manufactured from hard drawn copper, drilled for lug connection and suitable material for mechanical connectors



Ref.	Current Rating	Contact Type
E60 Base	200A	Tunnel
E150 Base	200A	T
E300 Base	400A	T

## Fuse Handles

- Accepts BS 88 J type fuse links and fuse handle links
- Handle manufactured in glass reinforced polyester
- Handle operation by wedge tightening thumb screws



Ref.	Design	Contact centre
Handle MJW3	Un-shrouded	83mm
Handle MJW3ST	Shrouded	83mm
Handle MJW4ST	Shrouded	92mm
Handle PSA	Shrouded	92mm

## Fuse Handle Links

- Manufactured in electro-plated hard drawn copper with riveted centre piece



Ref.	Current Rating	Contact centre
25177	400A	83mm
25178	600A	92mm
25179	800A	92mm

## Spring Bolted Links

- Operation by screwdriver wedge tightening
- Manufactured in hard drawn copper
- Lifting lug for easy removal
- Angled sides for entry guidance
- Link extractor tool available



Ref.	Current Rating	Contact centre
25160	400A	83mm
25161	600A	92mm
25162	800A	92mm

**Lucy Switchgear**

Howland Road, Thame, Oxfordshire, OX9 3UJ, UK  
tel: **+44 (0)1844 267267** fax: +44 (0)1844 267223  
email: sales@lucyswitchgear.com

**Lucy Middle East**

PO Box 17335, Jebel Ali, Dubai, United Arab Emirates  
tel: **+9714 812 9999** fax: +9714 812 9900  
email: sales@lucyme.ae

**The Saudi Lucy Company Ltd**

PO Box 834, Al-Khobar, 31952, Saudi Arabia  
tel: **+966 3 8823057** fax: +966 3 8822553  
email: info@saudilucy.com



[www.lucyswitchgear.com](http://www.lucyswitchgear.com)

LS00001 CO 08 2004